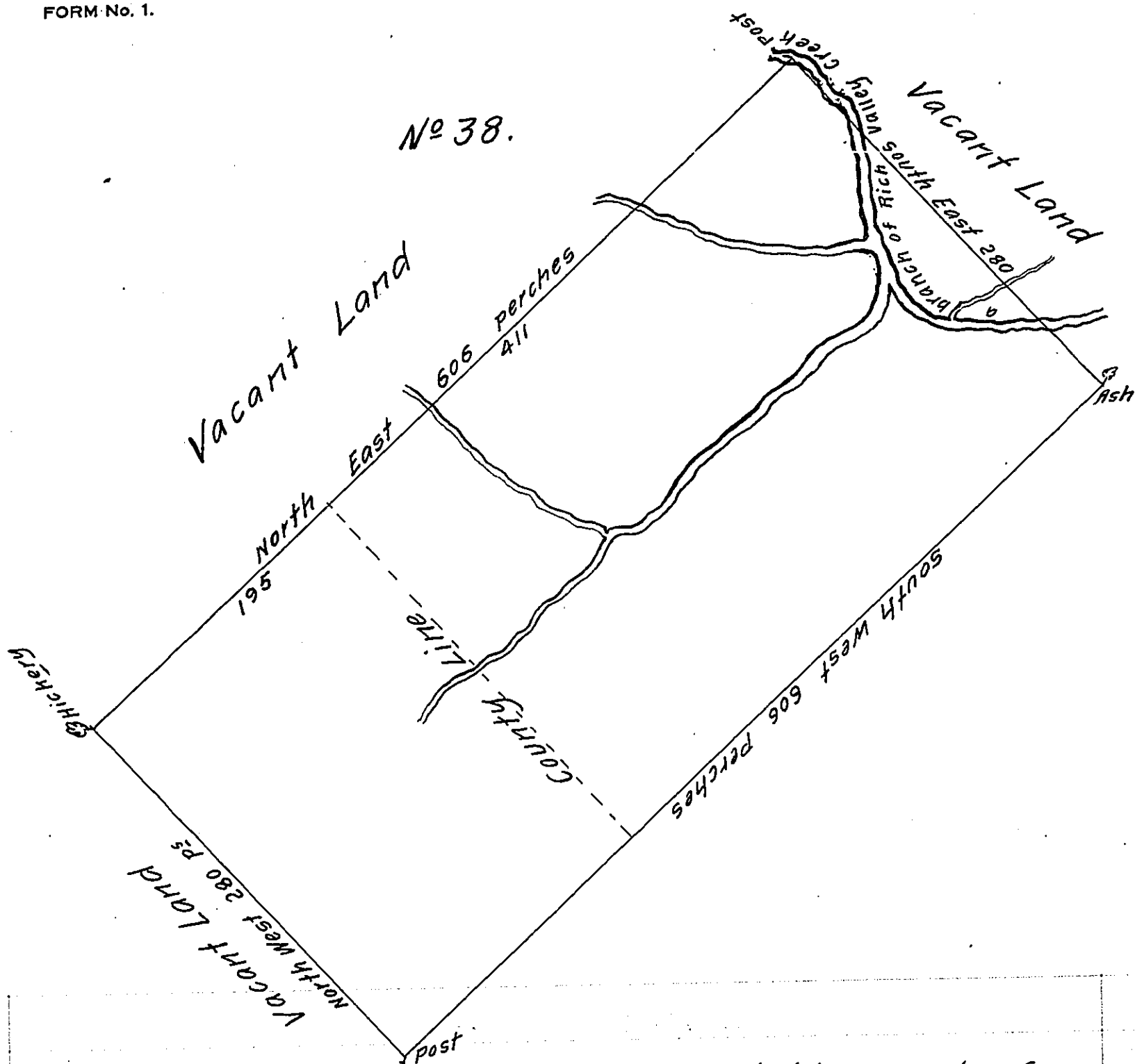


No 38.



By Virtue of a Warrant \_\_\_\_\_ dated the \_\_\_\_\_ day of \_\_\_\_\_  
 Surveyed unto William Allen in Right of William Penn a  
 tract of Land, Part thereof lying in the County of Philadelphia and  
 part in the County of Bucks Beginning at a Hickery tree markt  
 for a corner thence by vacant land Northeast six hundred and  
 six perches to a post, thence by vacant land southeast Two  
 hundred and eighty perches to an ash Tree thence by vacant  
 land Southwest six hundred and six perches to a post thence  
 by vacant land Northwest two hundred and eighty perches  
 to the place of beginning, containing one Thousand acres with  
 the usual allowance of Six & Cent.

Surveyed 7<sup>th</sup> or 15<sup>th</sup> 1730. By Nich<sup>s</sup> Scull -

IN TESTIMONY that the above is a copy of the original remaining on file in  
 the Department of Internal Affairs of Pennsylvania, made  
 conformably to an Act of Assembly approved the 16th day of  
 February, 1833, I have hereunto set my Hand and caused  
 the Seal of said Department to be affixed at Harrisburg,  
 this twelfth day of July 1910.

*Henry Howell*  
 Secretary of Internal Affairs.